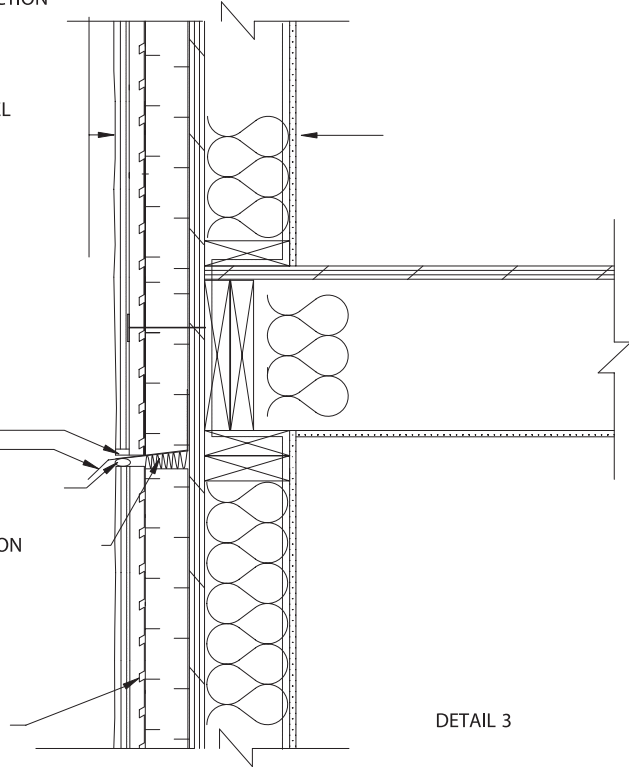


TYPICAL WALL CONSTRUCTION

FINISH COAT  
 BASE COAT  
 MESH  
 STUCCO RAINSCREEN PANEL  
 RIGID INSULATION  
 TAR PAPER  
 EXTERIOR SHEATHING  
 STUD WALL  
 BATT INSULATION  
 VAPOUR BARRIER  
 GYPSUM BOARD

VENT HOLES  
 @ 800 MM O.C.  
 FLASHING  
 FOAM ROD & CAULKING  
 AT CONTROL JOINT  
 JOINT C/W BATT INSULATION

BOSSSES IN  
 RAINSCREEN PANEL



DETAIL 3

NOTE: WITH INCREASED THICKNESS OF RIGID INSULATION THE VAPOUR BARRIER CAN BE LOCATED TO THE OUTSIDE FACE OF THE EXTERIOR SHEATHING

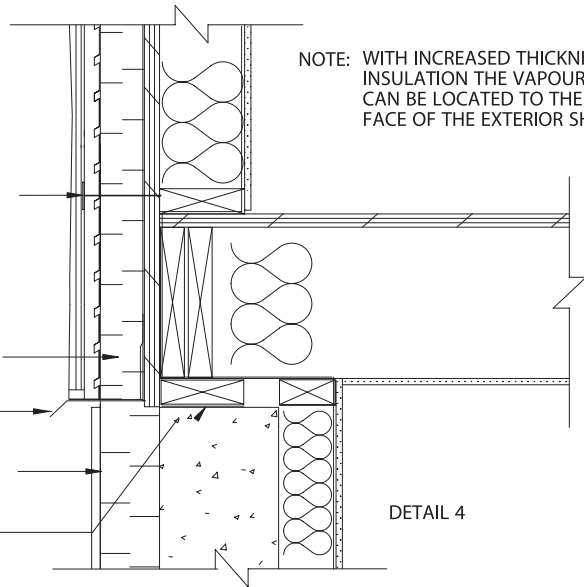
MECHANICAL FASTENER  
 SPACED @200MM O/C.(MAX)

WATER RESISTANT BARRIER  
 TO OVERLAP FLASHING

FLASHING

PARGING ON METAL LATH  
 ON RIGID INSULATION

SILL GASKET



DETAIL 4

DETAIL 4.3 DETAILS OF STUCCO AT GROUND AND FLOOR LEVELS  
 (INSULATED CAVITY)